

HEAVY DUTY
— 2016 —



FEATURING NEW

Pro-Link® Ultra Workstations
SMARTER. EASIER. ESSENTIAL.

THE RECOGNIZED STANDARD IN DIAGNOSTIC SCAN TOOLS



Offer expires: **OCTOBER 31, 2016**
Order now! Limited quantities available.

Snap-on®

HAND TOOLS



TechAngle® Electronic Torque Wrenches

\$17.43* Per Week • 104 Weeks **TERMS** ATECH4RS600 (3/4" Drive, 60 to 600 ft. lbs.) **\$1,506.95**

ATECH3FS250 (1/2" Drive, 12.5 to 250 ft-lb) **\$826.95 \$744.25**

ATECH3FR250B (1/2" Drive, 12.5 to 250 ft-lb) **\$634.95 \$571.45**

ATECH2FR100B (3/8" Drive, 5–100 ft-lb) **\$559.95 \$503.95**

- Features an internal translation feature that allows the user to select a language for the LCD to display (English, French, German or Spanish).
- Highly accurate (+/- 2% CW & +/- 3% CCW, 20% to 100% of full scale)
- Four torque alert modes - LED, LCD, Audio, Vibration
- Sealed ratchet with Dual 80® technology; smooth operation with a 4.5 degree swing arc
- Dual Progressive LED's allows user to anticipate torque target for greater accuracy
- Cycle counter to ensure how many fasteners have been torqued
- Highly configurable ten presets with the ability to customize numerous functions (sleep mode, LCD display, calibration, etc.) and store up to 50 records



U.S. Adjustable Click Type Torque Wrenches

1" Drive QD5R1000A (200-1000 ft-lb) **\$2,425.00**

3/4" Drive QD4R600A (120–600 ft-lb) **\$954.95 \$859.45**

1/2" Drive QD3R250A (50-250 ft-lb) **\$409.95 \$368.95**

- Reduced swing arc allows technicians to use in tighter areas such as engine compartments offering overall improved clearance
- Virtually maintenance-free sealed ratchet heads keep out dirt and moisture
- Cannot be accidentally disassembled if wound down past scale
- Accurate readings to ±4% CW and ±6% CCW from 20% of full scale to full scale
- Roll-marked scale for better visibility & permanency



1/2" Drive Soft Grip Handle Breaker Bar

SHN36 **\$211.95 \$190.75**

- Soft-grip handle provides additional comfort and improves control



3/4" U.S. Adjustable Click Type Torque Wrench (200–600 ft-lb)

TQR600E **\$999.95 \$899.95**

- Fixed ratchet offers a sealed Snap-on® ratchet that is rigidly fixed in line with the torque body
- Snap-on® sealed ratchet head is virtually maintenance free – more time working with the tool, less time on tool maintenance
- Thumb screw type adjustment is faster than cycling through a micrometer style torque wrench – guard prevents setting from being changed accidentally – setting is displayed in window – conversion table to N•m displayed on handle



1/2" Drive Flex-Head TQ Series Torque Wrench (40–250 ft-lb)

TQFR250E **\$399.95 \$359.95**

- Guaranteed accuracy within ±4% of any clockwise setting from 20–100% of full scale
- Thumb screw adjustment; quickly adjust to desired torque and thumb screw guard prevents accidental adjustment



3/4" Drive 11 pc 12 pt Chrome Sockets

411LDH **\$607.95 \$547.15**

- 11 pc set, sizes 3/4 - 1 1/2"



3/4" Drive 7 pc 12 pt Chrome Sockets

407LDH **\$706.95 \$636.25**

- 7 pc set, sizes 1-9/16 - 2"



1/2" Drive 50 mm Open End Metric Crowfoot Wrench

SCOM50A **\$89.95 \$80.95**

- Used for removing and installing large hydraulic lines on Hitachi® and Komatsu® earth moving equipment



Mechanical Micrometer Set 0-4"

MICM0-4 \$635.80

- No-glare satin chrome finish which resists rust
- Advanced sleeve design with staggered lines and distinct figures for precise and easy readability
- Insulated frame for prevention of temperature related expansion and contraction
- Provides quick and easy adjustment
- Reading in ten-thousandths of an inch (.0001") with a vernier scale on the sleeve

Individual Micrometer also available:

Mechanical Micrometer 0-1"

MICM1 \$127.95



6" Electronic Caliper

CAL6E ~~\$192.10~~ \$172.90

- Stainless-steel, .0005" resolution, and 0-6" measuring range
- Lightweight and comfortable
- Auto-off after 30 minutes, last measuring position is retained
- SAE/millimeter conversion reads .0005" or 0.01 mm
- Accuracy 0-4" ($\pm .001$ ") 4-6" ($\pm .0015$ ")
- Accuracy 0-100 mm (± 0.025 mm) 100-150 mm (± 0.04 mm)
- Hardened stainless-steel body



9" Aluminum Lighted Level (Blue-Point®)

TL900L \$37.75 \$34.00

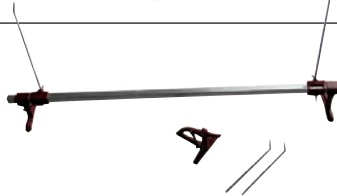
- Lighted level for more accurate readings under all conditions
- Machined Billet Aluminum for added durability
- Rare earth magnets attach to ferrous surfaces
- 45°, 90° and 180° scales for flexibility
- Auto shutoff feature after ten minutes extends battery life
- Uses two AAA alkaline cells (included)



Dial Bore Gauge

GA2-6B ~~\$335.95~~ \$302.35

- All anvils laser marked for easy selection
- Gauge chart for quick and easy anvil selection
- Supplied in metal case with foam insert
- Ergonomic design with nonslip insulating grip
- Carbide contacts for extended wear
- Graduations 0.0005"
- Approximate depth 6"



Scribe Type Toe Gauge- 5" & 10" Legs, 11" & 17" Pointers

WAM0517 \$421.85

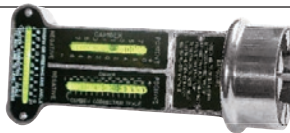
- Gives precise, quick reading
- Pointers are adjustable to hub height for greater accuracy
- Scale is graduated in 1/32" increments and in millimeters
- Scribe included



Tandem Tracker Set - Truck

WAM1888L \$168.70

- Used to measure tracking of tandem axles
- Provides accurate measuring points
- No need to remove the hub covers, eliminates mess
- Used with WAM188L and WAM1890



Magnetic Wheel Alignment Gauge

WAM0684 \$699.65

- Durable die-cast aluminum
- Multi-pole alnico magnet
- Removes burrs on hub surface; built-in cutting teeth



Trailer Kingpin Extension

WAM1889 \$255.15

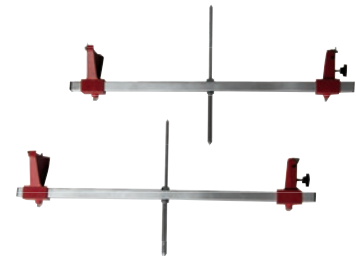
- Makes fast, accurate measurements from the kingpin center to the trailer tandems
- Easily adjusts to fit various height trailers



Turntable Set - HD, Trucks

WAM1100 \$2,052.85

EC \$17.26* Per Week • 156 Weeks TERMS



Tandem Tracker Set - Truck

WAM1890 \$390.95

- Aluminum wheels up to 28"
- Used to measure tracking of tandem axles
- Fits on the outside of the wheels so aluminum wheels will not be damaged
- No need to remove the hub covers
- Provides accurate measuring points
- Used with WAM1889



Truck Front Slip Plate Set

WAM1841 \$571.10

- Allows unrestricted movement of front tires to make accurate adjustments
- Eliminates friction between the tires and floor
- Allows 1-5/8" movement in each direction
- Overall size 24" x 16" x 3/8"



Tandem Axle Spacing Caliper - Truck

WAM1891 \$202.65

- Easily check the spacing between the axles of tractors or trailers
- Ensures correct alignment and tracking

HAND TOOLS



3 pc 12-Point Combination Wrench Sets

OEX703K1 (1-3/16-1-5/16") ~~\$390.05~~ **\$351.05**

OEX703K2 (1-3/8-1-1/2") ~~\$461.10~~ **\$414.95**

- The Flank Drive® box-end wrenching system grips the fastener flats and provides up to 15-20% more turning power
- Set at 15° angle for knuckle clearance and increased access in any space



12-Point SAE Flank Drive® Standard Combination Wrench

OEX50B (1-9/16") ~~\$178.60~~ **\$160.75**

OEX52B (1-5/8") ~~\$184.65~~ **\$166.10**

OEX54A (1-11/16") ~~\$206.80~~ **\$186.10**

OEX56A (1-3/4") ~~\$220.55~~ **\$198.50**

OEX58A (1-13/16") ~~\$278.65~~ **\$250.80**

OEX60A (1-7/8") ~~\$300.00~~ **\$270.00**

OEX64A (2") ~~\$332.90~~ **\$299.60**

- 7.5° offset broaching allows the user to flip the box end over to obtain a more advantageous grip on a fastener for restricted clearance areas



16pc Punch and Chisel Set

PPC715BK

~~\$361.55~~ **\$325.40**



9 pc TORX® Instinct® Soft Grip Screwdriver Set

SGDTX90BR (Red)

SGDTX90BG (Green)

SGDTX90BO (Orange)

Each: ~~\$206.95~~ **\$186.25**

- Designed for internal type TORX® fasteners used in automotive and appliance industries

8 pc Instinct® Soft Grip Combination Screwdriver Set

SGDX80BR (Red)

SGDX80BG (Green)

SGDX80BO (Orange)

Each: ~~\$175.95~~ **\$158.35**

- (5) Flat tip, plus (3) PHILLIPS® tip drivers in a storage tray



Demolition 18" Chisel

SPDC18R (Red)

SPDC18G (Green)

SPDC18O (Orange)

Each: ~~\$102.50~~ **\$92.25**

- Exclusive crown handle offers protection from off-center hammer strikes and a comfortable, secure grip



Slack Adjuster Wrench

BSA916 ~~\$56.65~~ **\$50.95**

- For brake service and slack adjuster installation on heavy-duty trucks equipped with Bendix® automatic slack adjusters
- Use to turn the manual adjuster hex
- Extra deep 9/16" hex allows reach to recessed adjusters
- 14-1/2" overall length helps to overcome the anti-reverse mechanism

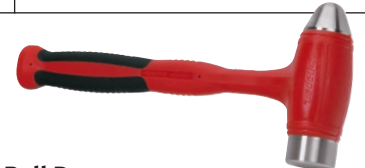


Dead Blow Soft Grip Hammers

HBFE48 (48 oz.) ~~\$85.95~~ **\$77.35**

HBFE56 (56 oz.) ~~\$113.95~~ **\$102.55**

- Free flowing shot design to improve dead blow action while reducing rebound
- Compact head has larger surface striking area and heavier caps to improve delivered force by as much as 40%



Ball Peen

Soft Grip Dead Blow Hammers

HBBD32 (32 oz.) ~~\$113.95~~ **\$102.55**

HBBD40 (40 oz.) ~~\$125.95~~ **\$113.35**

- Composite shank extends from the head through the handle, delivering a more powerful blow and dampening vibration
- Internal steel canister with free flowing shot design delivers maximum dead blow action



Brake Slack Adjuster, Rockwell Style (for heavy duty trucks)

BT4651 ~~\$86.95~~ **\$78.25**

- 5/16" double square configuration
- Automatic slack adjuster tool set includes offset, reversible automatic release tool



3pc Striking Scraper Set

PKNC300 ~~\$118.50~~ **\$106.65**

- Heavy-duty blade extends through the handle and meets cap



3 pc Narrow Width Striking Scraper Set

PKNC301

~~\$118.50~~ **\$106.65**



3 pc Rigid Carbon Scraper Set

CSA300AR (Red)

CSA300AG (Green)

CSA300AO (Orange)

Each: ~~\$113.95~~ **\$103.70**



Complete Heavy Duty Bushing Driver Set

A257 ~~\$839.95~~ **\$755.95**

- Complements the A157C set by adding 27 larger adaptors for transmission work as well as many other automotive and industrial applications



Heavy Duty Bushing Driver Set

A158B ~~\$214.95~~ **\$193.45**

- Includes eight basic adaptors for servicing bushings on trucks, tractors and buses



35 pc Master Extractor Set

EXD35 ~~\$324.95~~ **\$292.45**

- Quickly and easily extracts tough screws from 3/32–15/16" (including metric sizes)
- Includes (16) left-hand mechanic's length cobalt drill bits, (13) multi-spline screw extractors and (6) spiral flute screw extractors in storage case



Master Ball Joint/Universal Joint Press Set

BJP1 ~~\$749.95~~ **\$674.95**

- Master ball joint press set covers the majority of US SUVs, light trucks and passenger cars
- Installs and removes ball joints with pre-fitted straight grease fittings
- Press frame features large throat for increased ball joint applications and vise mount capability for U-joint applications



76 pc Combination Tap and Die Set

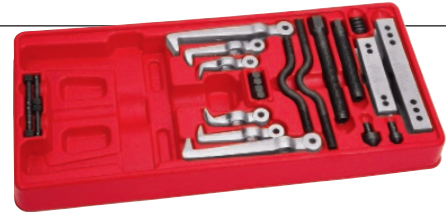
TDTDM500A ~~\$408.95~~ **\$367.95**

- 1/4–1/2" (3–12 mm)
- NF and NC threads, taps and dies from 4-40 to 12-24
- Includes BSP, (2) die stocks, (3) tap wrenches, (2) screw pitch gauges and adjusting screwdriver in a storage case

Adaptor

BJP1-28A ~~\$65.65~~ **\$59.10**

- Ball joint adaptor for servicing 4 x 4 Dodge® Ram® 2500/3500 vehicles (2003 and later) and Ram® 1500 Mega Cab® vehicles (2004–2010)
- Use with BJP1 master ball joint/universal joint press set
- Used for removal and installation of lower ball joint and installation of upper ball joint



Gear Puller Set

CJ2002 ~~\$619.00~~ **\$557.10**

- Use on Pitman® arms, timing gears, carrier side bearings and more
- Combine to create 10 different pullers
- Capacity from 6–10 tons depending on yoke and jaws used



SAE/Metric Plug Tap Set

TAMA141 ~~\$319.95~~ **\$287.95**

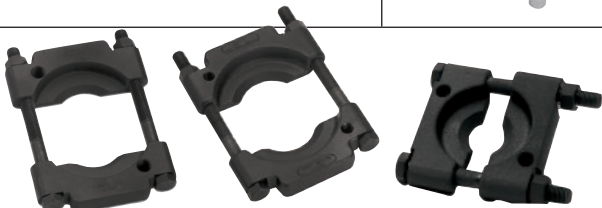
- Built for those who frequently tap and need a comprehensive set of taps
- Wide array of taps in most popular SAE and metric sizes
- High-quality handle with two adjustable tap sockets (0-1/4" and 1/4–1/2") provides secure, precise hold during tapping applications



Truck Anchor Pin and Bushing Press

TAP1 ~~\$350.65~~ **\$315.60**

- Designed to remove brake anchor pins and bushings on 16-1/2" Q type S-cam tractor and trailer brake systems from Dana-Spicer®, ArvinMeritor® (Rockwell®), Eaton®, Timkin® and Fruehauf® without removing wheel hub
- Designed for use with 3/4" impact guns



Bearing Separators

CJ951 (4-1/2") ~~\$235.95~~ **\$212.35**
 CJ952 (6-1/8") ~~\$407.95~~ **\$367.15**
 CJ953 (8-3/4") ~~\$1,122.95~~ **\$23.74***
Per Week • 52 Weeks

- For separating and pulling double bearings and close fitting gears
- Use with tapped hole, two-jaw pullers or floor presses

Limited quantities. Participating Franchisee or other sales representative only. Offer expires October 31, 2016. Offer cannot be combined with any other trade in or discount. * Extended Credit (EC) payment example is based on: the purchase price less a trade-in or cash down payment in the amount stated below the payment example with the stated number of payments to be made, and example time price differential charge of 18.9%/yr (may be higher or lower based on credit approval and/or state). Weekly payments are subject to business credit approval. Taxes and costs of financing, e.g. UCC costs extra. See important credit notice on back cover for additional terms and conditions.

CORDLESS POWER TOOLS



1/2" Drive 18 V MonsterLithium Impact Wrench Kit

CT8850 **\$789.95**

- 600 ft-lb of torque output breaks stubborn fasteners loose easily
- Super bright 1 W LED illuminates work area
- Includes (2) MonsterLithium batteries, charger and tote bag



Also available with Quick Change Chuck
CT8850QCDB (Tool Body Only) **\$447.50**

3/8" Drive 18 V MonsterLithium Impact Wrench Kit

CT8810A **\$692.95**

CT8810AQCDB (Tool Body Only) **\$317.95**

- Provides an incredibly powerful 230 ft-lb at a lightweight 4.25 lb
- Includes (2) batteries, 4.0 Ah charger and tote



18 V 1/2" MonsterLithium Compact Cordless Drill Kit

CDR8815 **\$702.95**

- Heavy-duty gearbox provides higher spindle lock torque — 500 in-lb
- Side handle for added support



18 V Cordless Grease Gun Kit

CGG8850 **\$608.95**

CGG8850DB (Tool Body Only) **\$332.95**

- Two-speed, hi-torque 18 V DC motor delivers outstanding flow and pressure
- 36" high-pressure hose with spring guard and coupler

18 V MonsterLithium Hammer Drill Kit

CDR8850H **\$691.95**

- 1/2" single sleeve steel chuck with carbide jaws
- Super bright 1 watt LED illuminates work area
- Includes (2) 18 V MonsterLithium 4.0 Ah batteries and charger with a tote bag



18 V Lithium Cordless LED Lights

Work Light

CTL8850 ~~\$104.95~~ **\$94.45**

- 120° rotating head
- Dual brightness settings (500 and 250 lumens)

Compact Floodlight

CTL8850 ~~\$106.95~~ **\$96.25**

- Light rotates 120° and swivels 180° to direct light to the work area
- Dual brightness settings 750 and 375 lumens



(Battery and charger are not included)

14.4 V Rechargeable LED Cordless Underhood Light

CTLUH761 ~~\$199.95~~ **\$179.95**

- 800 lumens, ultra bright light output
- Expandable 81" clamp to position light at work area



14.4 V MicroLithium Cordless Reciprocating Saw Kit

CTRS761 **\$492.95**

- 3,100 strokes per minute
- Variable speed switch
- Integrated LED work light



14.4 V Cordless MicroLithium 60 LED Utility Light

CTLU761

~~\$100.95~~ **\$90.85**

- 540 lumens, ultra bright light output
- Battery and charger not included



14.4 V 3/8" Drive MicroLithium Cordless Impact Wrench Kit

CT761QC

429.95

- 120 ft-lb torque output
- 2,500 RPM free speed
- Tri-beam headlights illuminate work area



18 V or 14.4 V Lithium Batteries

- Fast, 55-minute charge time

CTB8185 (18 V MonsterLithium) ~~\$182.95~~ **\$164.60**

CTB8172 (14.4 V MicroLithium) ~~\$98.95~~ **\$88.95**



14.4–18 V Multi-Bay Charger

CTC123 ~~\$369.95~~ **\$332.95**

- High current charging — 5.8 A
- Simultaneously charges three batteries





**1" Drive 6-Point SAE
13/16" Square Budd Wheel
Impact Socket**
BWD483 ~~\$144.55~~ **\$130.10**

**3/4" Drive 6-Point SAE
13/16" Square Budd Wheel
Impact Socket**
BWD482 ~~\$110.20~~ **\$99.20**



**7 pc 1/2" Drive Shallow Impact
Swivel Socket Sets**

307IPLY (Standard) ~~\$459.95~~ **\$413.95**
• IPL18C thru IPL24C plus IPL28C, IPL30C
and IPL36C (7 pc) (9/16" to 3/4", 7/8",
15/16", 1-1/8")
307IPLMY (Metric) ~~\$489.95~~ **\$440.95**
• Includes (7) shallow impact swivel sockets
(14, 15, 17-21 and 24 mm)



**1/2" Drive 12-Point Deep
Impact Socket Sets**

313SIMD (13 pc SAE Set) ~~\$454.95~~ **\$409.45**
• Includes (13) deep impact sockets (1/2-1-1/4")
312SIMDM (12 pc Metric Set) ~~\$427.20~~ **\$384.50**
• 12 piece set contains sizes 15 to 25 mm and 27 mm

**3/4" Drive
TORX® Bit
Socket Drivers**

T602E (T60)
~~\$46.25~~ **\$41.65**
T802E (T80)
~~\$68.05~~ **\$61.25**



3 pc 1/2" Drive Locking Impact Extension Set
303IMXL ~~\$195.70~~ **\$176.15**

- Ideal for use on transmission bellhousing bolts, transaxle and suspension service
- Pull back collar for fast and easy attachment and removal of sockets
- IMXL32, IMXL52 and IMXL102 (3pc) (3-1/2", 5", 10") in storage tray



1/2" Drive Shackle Pin Sockets
SPS10A (41/64") ~~\$65.35~~ **\$58.80**
SPS11A (21/32") ~~\$65.35~~ **\$58.80**
SPS12 (3/4") ~~\$70.30~~ **\$63.25**



**1/2" Drive 12-Point Metric 12 mm
Extra Long Head Bolt Socket**

S6160 (8" long) ~~\$59.15~~ **\$53.25**
• 8" length reaches past cam and rocker assembly to service head bolts

**1/2" Drive 12-Point Metric 12 mm
Head Bolt Socket**

S6194 (4-1/8" long) ~~\$50.65~~ **\$45.60**
• 4-1/8" length reaches past cam and rocker assembly to service head bolts



**1/2" Drive 12-Point SAE 1/2" Heavy-Du-
ty Spicer Drive Impact Socket**

S6260 ~~\$56.85~~ **\$51.20**
• For removal of heavy-duty spicer drive shaft bolts that have 1/2" fasteners found on Kenworth®, Peterbilt® trucks and many other heavy-duty applications
• 8" long

**1/2" Drive 6-Point
SAE 3/4" 30/30
Air Brake Chamber
Impact Socket**

S6224 ~~\$60.60~~ **\$54.55**
• Extra-long design allows quick and safe removal of long threaded brake release stud assemblies



**1/2" Drive 12-Point SAE 1/2" Heavy
Duty Driveline Impact Socket**

S6197 ~~\$50.25~~ **\$45.25**
• 4-1/8" long

**1/2" Drive 12-Point Metric 13 mm
U-Joint Strap Bolt Impact Socket**

S6213 ~~\$56.20~~ **\$50.60**
• 8" long



**4 pc 3/8" Drive Snap Ring Impact
Extension**

204IMXA ~~\$103.95~~ **\$93.55**
• Set contains (4) extensions (IMX11-IMX111),
1-3/4, 3, 6 and 11" in storage tray



**1/2" Drive Heavy Duty Drive-
line Socket - 13 mm, 12 pt.**

S6413 ~~\$47.75~~ **\$43.00**
• 4-1/8" long

Drive Train Bolt Socket

S6412 ~~\$47.75~~ **\$43.00**



**3/8" Drive 12-Point Shal-
low Swivel Impact Socket**

IPDF12A ~~\$44.05~~ **\$39.65**
• Laser welded pivot pin, means smooth, full 30 degree uninterrupted swivel action, which allows efficient power transfer prolonging the life of the socket

PNEUMATIC TOOLS



1" Heavy Duty Impact Wrench

PT1800

PT1800L (6" Anvil)

Each: **\$1,475.00**

- Light weight design (16 lb)
- Powerful 1,800 ft-lb of torque output
- 3-speed forward and full power reverse
- Padded ergonomic side handle for comfortable use

EC **\$17.06***
Per Week • 104 Weeks **TERMS**



1" Drive Impact Wrench (Blue-Point®)

AT1300A **\$1,699.95**

- Workhorse performance for use on trucks, buses and heavy equipment
- Steel nose for rugged, demanding applications
- Thru-hole anvil

EC **\$19.66***
Per Week • 104 Weeks **TERMS**



Super Duty Air Hammer Set

PH3050BRCH4 **\$695.75**

- Variable speed soft-touch trigger provides ability to feather for greater control
- Four-position built in air regulator varies power for different applications

3/4" Drive Heavy Duty Impact Wrenches

MG1250

MG1250L (3" Long Anvil)

MG1250XL (6" Long Anvil)

MG1250P (Pinned Anvil)

Each: **\$995.00**

- 1,200 ft-lb of torque
- Lightweight one-piece housing cuts tool weight to a mere 8.1 lb for superior control and less user fatigue



3/4" Drive Impact Wrench (Blue-Point®)

AT670

~~\$727.95~~ **\$655.15**

- Lightweight composite housing with aluminum nose
- Three-position thumb operated forward/reverse lever
- Bottom handle exhaust
- Twin hammer mechanism



Heavy Duty Hammer (Blue-Point®)

AT2050 ~~\$203.95~~ **\$183.55**

- Intended for heavy-duty applications such as cutting large bolts and rivets, separating ball joints, cutting heavy gauge sheet metal and riving bushings
- 3,400 blows per minute



1/2" Drive Ratchet (Blue-Point®)

AT705B ~~\$264.95~~ **\$238.45**

- Ball bearing mounted motor for longer tool life

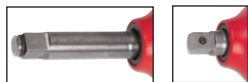
1/2" Drive Impact Wrench

MG3255 **\$469.95**

MG725L (3" Long Anvil) **\$539.95**

MG725P (Pinned Anvil) **\$539.95**

- 810 ft-lb maximum torque; 9,800 RPM free speed; 1,270 blows per minute
- Weighs 4.8 lb



3/8" Drive Super Duty Air Ratchet

PTR72 **\$389.95**

- 70 ft-lb torque output to remove stubborn fasteners
- Easily withstands 158 ft-lb of manual torque
- 275 free speed RPM for fast removal and installation of fasteners
- "Stop lock" pins prevent ratchet pawl lock up

Air Hammer Bit Set

PHG1055K

~~\$240.95~~

\$216.85

- Five popular configurations to cover a broad range of applications



1/2" Reversible Drill

PDR5000A **\$499.95**

- Precise .0025" chuck run-out for precision drilling
- Includes side handle for added control in high torque drilling applications



Dual Foot Air Chuck

GA359A ~~\$50.95~~ **\$45.85**

- Easily access hard to reach inner tandem wheels
- Tilt lock feature locks onto the valve
- 30° reverse angle chuck can be used on outside tires
- Screwdriver style handle
- Thread size of 1/4" NPT
- Overall length of 12"
- Maximum rating is 150 PSI
- FOR USE WITH AIR LINES ONLY. DO NOT USE ON INFLATORS.

3/8" Angle Drill (Blue-Point®)

AT811 ~~\$246.95~~ **\$222.25**

- Convenient, one-hand push button forward/reverse operation
- Rear exhaust keeps air away from the work area
- Ball bearing construction for longer tool life



29 pc ThunderBit® High Speed Jobber Length 135° Split Point Drill Bit Set

DBTB129 ~~\$299.20~~ **\$269.25**

- Includes (29) ThunderBit® high speed jobber length 135° split point drill bits (1/16–1/2")

Crud Thug® Removal Air Tool

PT280THUGA
\$579.95

- Quickly remove seam sealers, rust, paint and under-body coatings
- Optional rubber eraser wheel for pinstripe and graphics removal
- Easily removes automotive crud without fumes, heat buildup or surface damage
- Includes (1) fine wire wheel and (1) coarse wire wheel
- Thermally balanced air motor routes air between housing and liner for cooler tool temperatures and longer life



- Planetary gear system for increased torque
- Ergonomic cushion grip insulates against cold and vibration
- Adjustable exhaust outlet in rear of tool allows choice of exhaust direction
- Ten-position power/speed regulator allows easy RPM adjustment

Angle Cut Off Tool (4")

PT490 \$419.95

- Instinct® side handle (included) to increase leverage and ergonomic comfort-grip handle for less user fatigue



4" Reversible Cut Off Tool (Blue-Point®)

AT154RA ~~\$329.95~~ \$296.95

- 14.3" overall length provides extended reach for easier access
- Reverse mode controls direction of sparks for safety
- Side handle provides additional tool control

1 HP Heavy Duty Die Grinders

- Thermally balanced motor delivers up to 23,000 RPM of free speed for maximum performance
- Lightweight at just 2-1/2 lb for superior control, low vibration and less fatigue

PT400 \$312.95

- 7-1/2" Overall length

PT400L (Extended) \$349.95

- 4-3/4" steel shaft extension for extra reach in grinding applications



Cut Off Tool (3")

PT430 \$294.95

- Lightweight and ergonomic comfort grip handle for less user fatigue



4-1/2" Angle Grinder

PT450
\$369.95

- 12,000 RPM maximum free speed
- 1 HP thermally balanced air motor
- Lightweight, only 3.25 lb
- Features Snap-on® Instinct® Screwdriver Side Handle



Die Grinders

PT200A \$289.95

PT200AL (Extended) \$324.95

PT210A (90° Angle) \$349.95

- Built in 10 position power/speed regulator precisely matches tool speed to job requirements



3" Cut-Off Tool

PT250A
\$279.95



Dual Chuck Air Saw

PTS1000 \$349.95

- Dual chuck accepts 0.035" standard air saw blades and 6" long reciprocating saw blades
- Can cut 1/8" (3 mm) thick mild steel with smooth cutting action



Right Angle Mini Air Die Grinder (Blue-Point®)

AT109 ~~\$153.95~~ \$138.55

- Aluminum housing for long lasting durability
- Compact mini design with 90° head for easy access



6" Orbital Palm Sander (Blue-Point®)

AT406C ~~\$179.95~~ \$161.95

- Lightweight and durable composite housing
- For use with accessories rated above 12,000 RPM



High Speed Reciprocating Saw (Blue-Point®)

AT192A ~~\$186.95~~ \$168.25

- Adjustable blade guard to control cutting depth
- Performs straight or scroll cuts in metal and plastic



DIAGNOSTICS

PRO-LINK® Ultra

Pro-Link® Ultra Diagnostic Kits with 27" Monitor & Roll Cab

- Features 8.5" full color class LED sunlight-readable display
- Whether in the driver's seat or under the hood, the user has the ability to view diagnostic data results via HDMI output to 27" HD LED monitor
- Four custom fit foam drawer organizers with part number and description provide control for unit and accessories



\$82.54* Pro Link® Ultra Elite Kit *EEHD345EPWZ* **\$18,490.00**
Per Week • 260 Weeks
\$4,622.50 Down Payment

- 18 software titles included

\$27.65* Pro Link® Ultra Starter Kit *EEHD345SPWZ* **\$6,195.00**
Per Week • 260 Weeks
\$1,548.75 Down Payment

- Three predetermined software titles EEHD864007, EEHD864008 and EEHD864076 (no substitutions)



\$75.42* Pro Link® Ultra Elite Kit *EEHD706004* **\$16,895.00**
Per Week • 260 Weeks
\$4,223.75 Down Payment

- 18 software titles included

\$22.32* Pro Link® Ultra Starter Kit *EEHD184040* **\$3,750.00**
Per Week • 260 Weeks

- Three predetermined software titles EEHD864007, EEHD864008 and EEHD864076 (no substitutions)

Pro-Link® Ultra Software

EEHD864013 (Bendix®) ~~\$395.00~~ **\$375.25**

EEHD864015 (Detroit Diesel® DDEC II, III, IV and V Engines) ~~\$915.00~~ **\$869.25**

EEHD864018 (Detroit Diesel® DDEC 6, 10, 13 / Series 60/MBE) ~~\$1,020.00~~ **\$969.00**

EEHD864021 (Eaton®, Wabash® and Haldex®) ~~\$800.00~~ **\$760.00**

\$21.49* *EEHD864024* (Caterpillar® ACERT Engines) ~~\$1,070.00~~ **\$1,016.50**
Per Week • 52 Weeks

EEHD864027 (Caterpillar® Electronic Engines) ~~\$930.00~~ **\$883.50**

EEHD864031 (Detroit Diesel® MBE Engines MBE 900 & 4000 systems) ~~\$495.00~~ **\$470.25**

EEHD864041 (Navistar® Body & Chassis) ~~\$450.00~~ **\$427.50**

\$21.49* *EEHD865005* (Allison Transmission®) ~~\$1,070.00~~ **\$1,016.50**
Per Week • 52 Weeks

EEHD865009 (Navistar®) ~~\$965.00~~ **\$916.75**

EEHD865011 (2013 to Current Volvo® / Mack® v. 1.0) ~~\$885.00~~ **\$840.75**

EEHD865014 (Meritor® WABCO® Brakes) ~~\$745.00~~ **\$707.75**

\$23.99* *EEHD865048* (Light & Medium Truck) ~~\$1,135.00~~
Per Week • 52 Weeks

EEHD866003 (Cummins® v. 1.0) ~~\$1,050.00~~ **\$997.50**

\$17.35*
Per Week • 104 Weeks



Diagnostic Smoke Machine (EVAP)

EELD100A **\$1,499.95**

- Find Leaks
- Contains Diagnostic Smoke® technology for EVAP testing and general purpose applications
- Patented UltraTraceUV® non-contaminating dye solution pinpoints leaks that smoke cannot locate alone
- Combo LED and UV light in one, plus special glasses are included
- Necessity – eight of the top ten Emission DTC codes can be diagnosed with this unit
- Smoke solution does not produce an unpleasant odor in the shop
- Variable Flow Control manually reduce flow to help pinpoint the exact location of a leak

Digital Dual Thermometer

TEMP200

~~\$87.95~~ **\$79.15**

- Provides the ability to measure temperature at two different locations, provide a differential value and expedites the tuning of HVAC systems
- 10' cable provides the ability to support larger vehicles, multi-vented SUV and other similar applications



Advanced Wireless Video Scope

BK8500 **\$1,225.00**

- 5" LCD – largest screen in the market helps highlight the detail that competing products miss
- iOS® and Android® compatible—use the detachable image handle with the most popular mobile platforms for increased utility and versatility
- Windows® compatible—connect the detachable image handle to your Wi-Fi enabled Windows® PC
- Capture images and video, add text or audio annotation – enhances the presentation ability

\$14.17*
Per Week • 104 Weeks



Video/Still Recording Digital Borescope

BK6500 ~~\$939.95~~ **\$855.35**

- For enhanced viewing, a 4.3" (109 mm) diagonal LCD screen
- Dual-imager lenses: straight ahead and 90° angle
- Imager length: 36" (914 mm)
- Touchscreen interface enables easy feature selection
- Store the digital video image to internal memory or to an SD card



Video Inspection Scope

BK5600

~~\$514.95~~ **\$463.45**

- For enhanced viewing, a 4.3" (109 mm) diagonal LCD screen
- Digital still image capture with included SD card storage
- Includes 36" digital imager with 8.5 mm diameter head
- Touchscreen interface enables easy feature selection
- 90° glass mirror and magnet retrieval accessories included





Plasma Cutters

EC	\$26.32* Per Week • 260 Weeks	TERMS	PLASMA60i	\$5,895.00
EC	\$23.18* Per Week • 260 Weeks	TERMS	PLASMA30i	\$3,895.00

- Inverter technology features a small yet powerful package size that allows for portability in a variety of situations in the shop or on the job site
- Material capability ideal for cutting a variety of ferrous, non-ferrous and high strength materials

Specifications	PLASMA60i	PLASMA30i
Max Output Amps	Adjustable 20 to 55	Adjustable 5 to 25
Cut Thickness	3/4"	3/8"
Sever Thickness	1"	1/2"
Primary Input	208/230 V AC	115 or 230 V AC
Primary Input	40 A	30 A 115 V or 20 A 230 V
Duty Cycle Rating	40 A-60%	22 A-60%
Min Compressed Air Req.	68 psi @ 7 CFM	50 psi @ 7 CFM
Torch Cable Length	18'	12'
Ground Cable Length	18'	12'

- Depth-of-cut adjustability for applications where the top layer of material is cut without disturbing the base layer
- Pilot self-restart function provides the ability to cut perforated, grid or expanded metal applications

Butane Gas Torches

- Single-handed design and operation for maximum flexibility
- Ultrasonically-welded gas tank in combination with robust burner head built of stainless steel and ceramic materials provides unmatched durability
- Ergonomic rubberized grip conforms to the hand



TORCH300 (50-220 W)

~~\$71.95~~ **\$64.75**

- Adjustable flame length—up to 3.5"

TORCH400 (50-820 W)

~~\$95.95~~ **\$86.35**

- Adjustable flame length—up to 4.5"

Wire Feed MIG Welders

EC	\$24.37* Per Week • 260 Weeks	TERMS	MM250SL-CAN	\$4,095.00
EC	\$21.40* Per Week • 260 Weeks	TERMS	MM140SL-CAN	\$3,595.00
EC	\$22.66* Per Week • 156 Weeks	TERMS	MIG220-CAN	\$2,695.00

- Snap-on® MIG Welders have Higher Duty Cycles at Maximum Amperage Providing Added Weld Times and Performance that Surpasses the Competition
- Wire feed assembly, constructed of precision machined-cast aluminum, features all metal gearing and 800 in/min delivery for consistent wire speeds



Specifications	MM250SL-CAN	MM140SL-CAN	MIG220-CAN
Weld Amps	270	140	220
Single Pass Thickness	3/8"	1/4"	5/16"
Detachable Feeder	Yes	Yes	No
Duty Cycle Rating	185A-100%	140A-100%	185A-60%
Input Voltage (AC)	208/230	115	208/230
Cart Included	Yes	Yes	Yes

Spool Gun

Each: **\$1,625.00**

- 1 lb spool gun for MIG welding aluminum



MHG5A

- Use with MIG220 and MIG140

MHG5B

- Use with MM140SL, MM250SL and MM350XL

EC **\$18.79***
Per Week • 104 Weeks

Heavy Duty Plasma Cutter

EC **\$28.54***
Per Week • 260 Weeks

TERMS PLASMA50 **\$4,795.00**

- Dual power output with 30A setting for thinner, lighter metals and 50A setting for heavier applications
- Cuts 1/2" material, will sever up to 3/4"
- Includes 18' torch assembly, ground cable, goggles and consumables case



Auto Darkening Welding Helmet

EFP2CAMO

EFP2PREDATOR

Each: ~~\$479.95~~ **\$431.95**

- 180° welding lens, along with 4-sensor high-quality auto darkening filters with grind, sensitivity, and delay controls, plus low-battery and grind flash warning indicators to help get every job done with ease



Auto-Darkening Welding Helmet

YA4608 ~~\$459.95~~ **\$413.95**

- Four button "Digital Control" allows easy and precise selection of shade protection, delay and sensitivity
- Extra-large viewing area: 3.82" x 2.44"
- High definition welding lens for increased clarity
- Four wide-angle arc sensors
- Grind lock out function
- Solar and lithium battery powered



Iron Man® Welding Helmet

EFPIRONMAN

EFPIRONMANDIS (Distressed)

Each: ~~\$423.95~~ **\$381.55**

- Features a continuous 2 x 4" 4/9 – 13 shade external adjustable Auto Darkening Filter integrated into the patented 180° passive lens design – provides the user a viewing area of 23 in² when welding
- Helmet has external Grind Mode, Shade Sensitivity and Delay controls giving the user complete control for all of his welding needs

Limited quantities. Participating Franchisee or other sales representative only. Offer expires October 31, 2016. Offer cannot be combined with any other trade in or discount. * Extended Credit (EC) payment example is based on: the purchase price less a trade-in or cash down payment in the amount stated below the payment example with the stated number of payments to be made, and example time price differential charge of 18.9%/yr (may be higher or lower based on credit approval and/or state). Weekly payments are subject to business credit approval. Taxes and costs of financing, e.g. UCC costs extra. See important credit notice on back cover for additional terms and conditions.

FLUID SERVICE



Diesel EGR and Induction Cleaning System (Blue-Point®)

EEDF400 ~~\$959.95~~ **\$863.95**

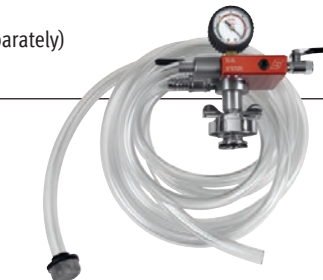
- The performance of clean diesel engines using cooled EGR and common rail injection can be adversely affected by soot and fuel deposits
- The EEDF400 System safely cleans the Diesel EGR circuit, coolers, intake, injectors, turbo charger and fuel system
 - Converts cleaner into foam to better penetrate hard carbon
 - Increases Cetane and enhances fuel atomization for more complete combustion
 - Requires cleaner and adaptor (sold separately)

Fuel Pressure Test Set

FOR COMPUCHECK® TEST PORTS

EEDF501 ~~\$440.95~~ **\$396.85**

- Designed for diesel fuel pressure and restriction testing on engines with Compucheck® test ports



Truck Coolant Refiller

SVTSRAD372T ~~\$423.95~~ **\$381.55**

- The first refiller designed specifically for large trucks and oversize systems; built of the highest quality parts and cut from aircraft grade aluminum alloy
- Fast refilling means almost a 50% improvement in coolant evacuation – a 20 gallon system can be emptied in under 10 minutes versus over 21 minutes with alternative products



Fuel Pressure Test Set

FOR FORD® POWER STROKE® ENGINES

EEDF502 ~~\$432.95~~ **\$389.65**

- Developed with input from technicians on adaptor selection for 7.3 L, 6.7 L, 6.4 L and 6.0 L Ford® Power Stroke® engines



Fuel Pressure Test Set

FOR GM® DURAMAX® ENGINES

EEDF500 ~~\$374.95~~ **\$337.45**

- Designed for testing diesel fuel pressure and vacuum on GM® 6.6 L Duramax® engines



EC **\$16.78***
Per Week • 156 Weeks

Cart Mounted Gas Engine Pressure Washer (Blue-Point®)

SEPW1600G **\$1,995.00**

- Includes ceramic plunger pump with stainless-steel valves, trigger gun, interchangeable nozzles, chemical injection, adjustable pressure, stainless steel cold wrap around coil, poly fuel tanks and GFCl protection



Long Handle Hose Nozzle On/Off Lever

NOZZLESPRY2 ~~\$49.95~~ **\$44.95**

- On/Off lever allows user to keep the same spray pattern and not have to turn the head to shut off the water



6 pc Large Truck Cooling System Adaptor Set

SVTA6100 ~~\$367.95~~ **\$331.15**

- Designed for use with the SVTS262C but compatible with virtually any cooling system tester
- Ideal for servicing large trucks (Volvo®, Kenworth®, Freightliner® and more)



Vacuum Brake Bleeder

BB9018 ~~\$118.95~~ **\$107.05**

- Fast efficient, one person vacuum bleeding
- Large 3 pint (1.8 liter) container
- Generates 25 in Hg vacuum with air pressure of 100 PSI



Hand and Tool Cleaning Towels

WOD5020

~~\$21.95~~ **\$19.75**

- Convenient hand towels for cleaning tools or hands of oil and grease
- Towels contain lanolin and rust preventatives



Diesel Compression Gauge

EEP500

~~\$243.95~~ **\$219.55**

- Dial reads from 9–800 PSI and from 0–5,500 kPa
- Includes 18" hose with release valve

Master Disconnect Set (Blue-Point®)

LDT40 ~~\$278.20~~ **\$250.40**

- Works great on quick connect, spring lock, quick coupler, Jiffy-tite® and other fittings
- Disconnect tools for fuel line quick connect and spring lock couplings, air conditioning line couplings, transmission oil cooler line connectors and clutch couplings
- Couplers for all major US and import brands of vehicles and light trucks



Truck Wheel Pan (Blue-Point®)

TWP8 ~~\$23.10~~ **\$20.80**

- Helps prevent messes and spills
- Fits rims with 13-3/4" inside diameter or larger for use on most large trucks and trailers
- Holds 88 oz of oil



Battery Chargers

EEBC400 (6/12 V) ~~\$682.95~~ **\$614.65**

EEBC400F (12/24 V) ~~\$713.95~~ **\$642.55**

- Adaptive: Standard automotive, deep cycle, AGM and gel cell batteries each require a different charging cycle
- Smart: Fully automatic operation: microprocessor controlled algorithms optimize the charge cycle without overcharging
- Also includes manual mode for timed charging



Battery System Tester

EECS750 ~~\$1,079.95~~ **\$971.95**

- Superior accuracy with CCA required input and conductance technology for rendering battery, starter and charging system status
- Test 6, 12, 24 V batteries from 100-2000 CCA and the new EFB start-stop vehicle battery
- Test results viewable via real-time graphs on the full color 3.5" screen
- Select from 8 languages for on-screen commands and reports from the built-in printer
- Convenient retractable under-hood hanger
- 10' long-reach cables with top-or-bottom orientation
- Customize printouts with personalized shop information
- USB port for software upgrades and data transfer



Battery System Tester

EECS550 ~~\$699.95~~ **\$629.95**

- Walk freely around the vehicle with main module, no need for a second tech to perform on screen commands like start or rev engine
- Superior accuracy with CCA required input and conductance technology for rendering battery, starter & charging system status
- Tests batteries from 6, 8, 12, 24V and from 100-2000 CCA
- Displays battery condition, voltage and more
- Features cable integrity technology and reverse polarity protection
- Select from 7 languages for onscreen commands & reports



Digital RMS Auto Ranging Multi-Meter

EEDM596EK

~~\$654.95~~ **\$589.45**

- True RMS with color display
- Measures AC/DC volts, AC/DC millivolts, ohms, continuity, diode, microamps, milliamps, amps, hertz, capacitance and temperature
- Built-in automotive inductive pick-up for tach, duty cycle, dwell and pulse width tests



Digital Manual Ranging Multimeter

EEDM503D

~~\$186.95~~ **\$168.25**

- Dial selectable ohms, AC/DC volts, AC/DC amps and diode functions
- Economical value with a great feature set



Power Inverter

EEPI2250 ~~\$599.95~~ **\$539.95**

- 2,250 watts of continuous power and 4,500 watts peak power to run a wide variety of tools, electronics and appliances
- Stable, clean and reliable power with high surge capacity for use in the most demanding applications
- Precise electronics to enable proper charging of electronics: laptops, cell phones and gaming devices
- Three 120 V AC outlets
- For tow trucks, fleets, construction vehicles and military use
- Unit must be hard wired into vehicle



Test Lead Kit

MTL800 ~~\$194.20~~ **\$174.80**

- Exceptional versatility for most automotive testing needs
- For use with all Snap-on® and Blue-Point® Multi-Meters
- Includes: MTL7005PK Back Probes, MTL800-1 Modular Test leads, MTL800-3 Crocodile Clips, MTL800-4 Piercing Probes, MTL800-5 Grabbers, MTL800-6 Modular Prods, MTL800-7 Spring Hooks and MTL800-PB Black Nylon Pouch

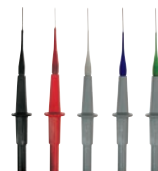


24 V Digital Display Circuit Tester (4-49 V DC Range)

EECT424HD ~~\$135.95~~ **\$122.35**

- LCD display provides a "no guess" voltage value of the circuit

- Backlit daylight readable LED indicates Green for Ground or Red for Power
- Surge protected circuitry displays 4 to 49.9 V DC (± 0.3 V accuracy)



Backprobes

MTL7005PK ~~\$45.90~~ **\$41.30**

- Bendable stainless-steel tips (standard diameter)
- Each probe is 4-1/2" (11.5cm) long with a tip diameter of 1/32" (1 mm)

SHOP ESSENTIALS



4X® Impact Gloves

4X® MATERIAL OFFERS SUPERIOR ABRASION AND TEAR RESISTANCE THAN STANDARD SYNTHETIC GLOVES

GLOVE308M (M)
GLOVE308L (L)
GLOVE308XL (XL)
GLOVE308XX (XXL)

Each: ~~\$58.95~~ **\$52.95**

- Pressure molded grip pattern on fingertip and thumb for enhanced tactility
- TPR (Thermal Plastic Rubber) on the knuckles and fingers protects against impact and abrasion injuries



Wrecker Gloves

Black **Hi-Visibility**
GLOVE504BL (L) GLOVE504HL (L)
GLOVE504BXL (XL) GLOVE504HXL (XL)

Each: ~~\$76.95~~ **\$69.25**

- Extreme all over protection
- Cut resistant palm and thumb
- Reflective finger tips and cuff piping



Snap-on® Impact Glove

GLOVE309M (M)
GLOVE309L (L)
GLOVE309XL (XL)

Each: ~~\$51.95~~ **\$46.75**

- Thermal Plastic Rubber (TPR) knuckle guard and finger protection
- Form-fitting TrekDry® material helps keep hands cool and comfortable
- Durable microfiber palm with Armortex® palm reinforcement panel

Safety Glasses with Built-in Ear Plugs

- Ensures workers are always compliant with integrated hearing and eye protection
- Hearing protection system integrated within the safety glasses
- Earplugs easily retract into the temple pieces
- Ergonomic comfort fit
- Anti-fog and anti-scratch lens
- ANSI impact rated lenses



GLASS70 Series Each: ~~\$24.95~~ **\$22.50**

GLASS70BYEAR (Black Frames, Yellow Lenses)
GLASS70RCLEAR (Red Frames, Clear Lenses)



GLASS80 Series Each: ~~\$29.95~~ **\$26.95**

GLASS80BCEAR (Black Frames, Clear Lenses)
GLASS80RCLEAR (Red Frames, Clear Lenses)



GLASS90 Series Each: ~~\$28.95~~ **\$25.95**

GLASS90BYEAR (Black Frames, Yellow Lenses)
GLASS90RCLEAR (Red Frames, Clear Lenses)



Gasket Knife

SO86BLK (Black) SO86RD (Red)
SO86BLU (Blue) SO86BRNZ (Bronze)

Each: ~~\$147.95~~ **\$132.95**

- Speedsafe® assisted opening enables smooth easy one-handed opening
- Blade is made of black DLC coated N690 steel
- Handle made of T6061-T6 anodized aluminum
- Trac-Tec grip in handle is ideal for working in wet situations



Mobile Phone Clip Cases

- Snap-on® branded cell phone case for wider phones absorbs shocks and shields from the elements
- Universally sized to fit large-screen smart phones (iPhone®, Samsung® Galaxy® Series and similar) with bigger displays that need extra protection

Large Sideways Clip Case

ECFCLPSIDE ~~\$22.40~~ **\$20.15**

- Dimensions: 5-1/2" x 3" x 1.7"

Extra Large Sideways Clip Case

ECFCLPSIDEXL ~~\$23.45~~ **\$21.10**

- Dimensions: 6.4" x 3.5" x 1"

Tall Cargo Clip Case

ECFCLPCARGOA ~~\$25.50~~ **\$22.95**

- External case dimensions: 5.8" x 3.1" x 2.3"
- Fully rotates for access at any angle, and even locks in eight different positions



Gerber® Gator® Plus S30V Knife

SEKG94MPKR (Red)
SEKG94MPKK (Black)

Each: ~~\$117.95~~ **\$105.95**

- High grade S30V steel for extra edge retention and corrosion resistance
- Black ceramic blade coating provides superior rust resistance
- Gator Grip® non-slip handle



Flashlight Stretch Holster

ECFLASHOLDER ~~\$16.60~~ **\$14.95**

- Rugged Snap-on® branded holster for flashlights - fits from 5/8-1-1/2" diameter barrels
- Two durable elastic side panels expand to keep flashlights from AAA-D secure



EC **\$20.94*** PER WEEK • 260 WEEKS TERMS

1 Ton Wishbone Hydraulic Transmission Jack (Blue-Point®)

YA727B **\$3,517.50**

- Use on bus, truck, farm, automotive and construction vehicles
- Load-restraint chain included



Industrial Wet/Dry Vacuum

YA1009SSA ~~\$756.00~~ **\$680.40**

- 11 gallon tank with EZ dump drain hose
- Long-life 2 stage motor
- On-board tool storage
- Includes 1.5" Wet/Dry Tool Set: hose with swivel end, crevice tool, upholstery tool, round dusting tool, single bend wand, (2) straight extensions, floor tool, squeegee tool and tool adaptor



Heavy Duty Adjustable Creeper

JCW75ABL (Black)

JCW75AR (Red)

Each: ~~\$309.95~~ **\$278.95**

- Features adjustable headrest
- 4" swivel casters with spring ride
- 16 gauge frame is 20% thicker than competitors



Heavy Duty Creeper

JCW70ABL (Black)

JCW70AR (Red)

Each: ~~\$288.95~~ **\$259.95**

- 4" swivel casters with spring ride
- 16 gauge frame is 20% thicker than competitors



5,000 Lumen Superflood Flood Light

ECFDA0509 ~~\$321.95~~ **\$289.75**

- Ultra-High powered flood light with 2 brightness settings: 5,000 Lumen (HI) and 2,500 Lumen (Low)
- Three power outlets (two 110 V and one 5 V USB) provide additional utility for unique wide area work light
- 25' (7.6m) cord enables you to use the light a significant distance from a power receptacle



Rechargeable Corded Floodlight

ECFLOODRC ~~\$326.95~~ **\$294.25**

ECFLOODRC-RF (Remote controlled) ~~354.95~~ **\$319.45**

- High powered flood light with two brightness settings: 2,500 Lumen (HI) and 1,250 Lumen (Low)
- Market leading runtime exceeding 4 hrs at High and 8 hrs at Low
- 25' (7.6 m) cord enables you to use the light while it charges
- Offers an additional USB power out (for charging USB devices)



Adjustable Bucket Seat Creeper

JCW95ABL (Black)

JCW95AR (Red)

Each: ~~\$266.95~~ **\$239.95**

- Heavy-duty 16 gauge 1" steel tube frame adjusts by pneumatic cylinder
- Adjusts by hand lever from 14-19-1/4"
- Fully padded, vinyl, wide bucket seat measures 17-3/4" L x 10" W x 8" H



Rechargeable LED Flashlights

ECF990R (Red)

ECF990G (Green)

ECF990O (Orange)

ECF990B (Blue)

ECF990BK (Black)

Each: ~~\$282.95~~ **\$254.65**

- High output LED produces 540 lumens on high, 162 on medium and 23 on low
- Run time: High - 1 hr 50 min, Medium - 7 hrs, Low - 50 hrs
- Effective Range on High - 679ft (207m), Medium - 341ft (104m), Low - 128ft (39m)
- Powered by one rechargeable lithium ion battery included; rechargeable hundreds of times

LED Flood Light (Blue-Point®)

ECFLOOD

~~\$233.95~~ **\$210.55**

- Powerful and uniformly bright illumination from 70 high output SMD LEDs
- 25' (7.6 m) cord for excellent reach



Adjustable Seat Creeper

JCW90ABL ~~\$179.95~~ **\$161.95**

- Heavy-duty 16 gauge 1" steel tube frame adjusts by pneumatic cylinder
- Adjusts by hand lever from 14-19-1/4"
- 13-3/4" round diameter seat pad is made of memory foam and is 2" thick



Rechargeable Shop Light

ECFBARLED (Red)

ECFBARLEDG (Green)

ECFBARLEDO (Orange)

Each: ~~\$149.95~~ **\$134.95**

- 500 lumens light output for broad illumination
- 3.7 V, 4,000 mAh Li-ion battery, 5 hour charger, 3-1/2 hour runtime

TOOL STORAGE



KETE682A0 Color Options



EPIQ Series Tool Storage with Remote Key Lock KETE682A0PDG \$12,945.00

- Latest feature makes EPIQ tool storage units that much more versatile
- Remote lock system is factory installed and includes two (2) key fobs and two (2) regular keys
- Tool box makes audible sounds when key fob is used
- 1 beep: unit is locked; 2 beeps: unit is unlocked
- Key fob can be paired to multiple tool storage units
- Unit must be plugged in and requires a standard 110 V outlet
- Key fob is powered by a standard key fob battery (CR2032)
- Range is up to 75 feet (unobstructed)
- Super Cab Drawer System: Three (3) extra wide drawers at the top of the roll cab provide access to most often used tools
- EPIQ Strength: Designed with more load capacity, this unit features a combination of our traditional corner gussets and standing-seam construction with additional top, bottom and side support to create our strongest roll cab design yet



KRL1032E Color Options



Double Bank Roll Cab

KRL1032EPIJ \$12,175.00

- Extended Cab System provides two super-wide and five extra-wide drawers for extra storage capabilities
- Extra-wide drawers feature four bottom stiffeners to support a full load of tools without sagging
- Lock 'n Roll® System prevents drawers from drifting open during unit movement
- 2" inch mounting centers provide maximum drawer arrangement flexibility
- Ball Bearing drawer slides with 227 lb capacity per drawer
- Double slides on five of the extra-wide drawers increase capacity to 500 lbs.
- High security tubular locks with restricted keyway can be easily keyed alike to other tool storage accessories
- Double wall construction and corner gussets for extra strength and rigidity
- Slide out writing surface in top narrow drawer



Heavy Duty Workbench (Blue-Point®)

BPWORKBENCH \$556.95 \$501.25

- Full bottom shelf and superior powder-coat finish
- Net weight: 139 lb
- Weight capacity: 1,200 lb
- 60-1/16" W x 30-3/4" D x 34-1/16" H



EPIQ Mobile Workstation

KEMW361A1PBO \$4,295.00

- Stainless steel work top with supports holds up to 1,000 lb – 37" x 30"
- Five (5) large 30" EPIQ InPulse™ drawers: four (4) 4" drawers and one (1) 6" drawer
- All 8" swivel casters having rigid locking capability with a strong brake system
- EPIQ case design: top and bottom panel, and side walls absorb heaviest load and impact
- Color-matched slotted accessory wall included for mounting of shelves and tool holders

KEMW361A1 Color Options



Limited quantities. Participating Franchisee or other sales representative only. Offer expires October 31, 2016. Offer cannot be combined with any other trade in or discount. * Extended Credit (EC) payment example is based on: the purchase price less a trade-in or cash down payment in the amount stated below the payment example with the stated number of payments to be made, and example time price differential charge of 18.9%/yr (may be higher or lower based on credit approval and/or state). Weekly payments are subject to business credit approval. Taxes and costs of financing, e.g. UCC costs extra. See important credit notice on back cover for additional terms and conditions.

Important Credit Notice: Please be aware that the weekly payment is an estimate only and may not apply to you. Your actual payment may be different than the estimated financing payment shown. All credit sale contracts are subject to approved credit and the terms of the standard Snap-on Credit credit sales contract form. Not all applicants will qualify. Taxes, installation and costs of financing, such as charges for filing UCC statements, are extra. Finance charges begin accruing at contract inception. Weekly payments shown are based on suggested list prices and your price may vary. Terms and finance charge rates may vary and such terms are subject to change without notice. In the event you fail to make payments when due, the terms of the contract will apply and late charges may be due. Please contact us regarding finance terms and restrictions.

While every attempt is made to ensure accuracy, errors during publication can occur. Product features and specifications can change. Pricing can change. Pricing is for Canadian market only. Snap-on and Blue-Point are trade marks, registered in the United States and other countries, of Snap-on Incorporated. ©Snap-on Incorporated 2016. All rights reserved. All other marks are trade marks of their respective holders.